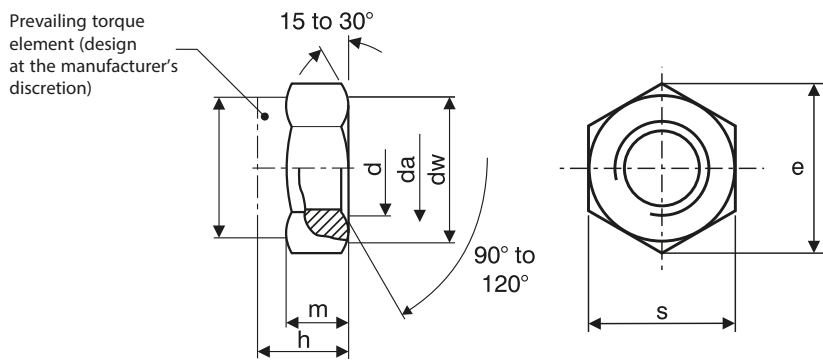


Prevailing Torque Type Hexagon Nuts (with non-metallic insert)

DIN 985 Thin Type



DIN 985 Dimensions of nuts

| Nominal size and thread diameter d | | | | | | | |
|------------------------------------|------|------|-----|------------|----|-----|----|
| d | h | P | s | d | h | P | s |
| M2.5 (≠DIN) | 3.5 | 0.45 | 5 | M24 | 24 | 3 | 36 |
| M3 | 4 | 0.5 | 5.5 | M27 | 27 | 3 | 41 |
| M4 | 5 | 0.7 | 7 | M30 | 30 | 3.5 | 46 |
| M5 | 5 | 0.8 | 8 | M33 | 33 | 3.5 | 50 |
| M6 | 6 | 1 | 10 | M36 | 36 | 4 | 55 |
| M7 | 7.5 | 1 | 11 | M39 | 39 | 4 | 60 |
| M8 | 8 | 1.25 | 13 | M42 | 42 | 4.5 | 65 |
| M10 | 10 | 1.5 | 17 | M45 | 45 | 4.5 | 70 |
| M12 | 12 | 1.75 | 19 | M48 | 48 | 5 | 75 |
| M14 | 14 | 2 | 22 | M52 (≠DIN) | 52 | 5 | 80 |
| M16 | 16 | 2 | 24 | M56 (≠DIN) | 56 | 5.5 | 85 |
| M18 | 18.5 | 2.5 | 27 | M60 (≠DIN) | 60 | 5.5 | 90 |
| M20 | 20 | 2.5 | 30 | M64 (≠DIN) | 64 | 6 | 95 |
| M22 | 22 | 2.5 | 32 | | | | |

Prevailing Torque Type Hexagon Nuts (with non-metallic insert)

DIN 985 Thin Type

Specification for nuts and reference standards

| Characteristic | | Standard |
|--|---|--|
| Material | | Steel |
| General Requirements | | As specified in DIN 267 Parts 1 and 15. |
| Thread | Tolerance | 6H ^a |
| | As specified in | DIN 12 Part 12 and 15. |
| Mechanical Properties (nut body) | Property Class (material) | d ≤ M39: 5, 6 ^b , 8, 10 d > M39: by agreement |
| | International Standards | M3 ≤ d ≤ M39: ISO 898-2 d < M3 and d > M39: as agreed |
| Material (insert) | | Non-metallic, e.g. polyamide. |
| Performance (prevailing torques) | | As specified in DIN 267 Part 15. |
| Limit deviations and geometrical tolerances | Property Grade | For sizes up to M16: A (previously, design m). For sizes over M16: B (previously, design mg). |
| | As specified in | ISO 4759 Part 1 |
| Surface finish | As processed. | |
| | DIN 267 Part 2 shall apply with regard to surface roughness. | |
| | DIN 267 Part 20 shall apply with regard to permissible surface discontinuities. | |
| | DIN 267 Part 9 shall apply with regard to electroplating. | |
| Acceptable inspection | | DIN 267 Part 5 shall apply with regard to acceptance inspection. |
| <p>a See DIN 267 Part 15 in this respect. b Only for fine thread nuts.</p> | | |