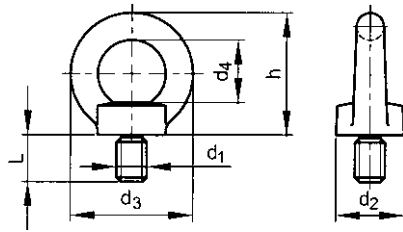


Lifting eye bolt with CE marking



DIN 580
ISO 3266
BS 4278



Technical Data

| d ₁ | d ₂ | d ₃ | d ₄ | h | L | P |
|----------------|----------------|----------------|----------------|-----|------|------|
| M6 (#DIN) | 20 | 36 | 20 | 36 | 13 | 1 |
| M8 | 20 | 36 | 20 | 36 | 13 | 1.25 |
| M10 | 25 | 45 | 25 | 45 | 17 | 1.5 |
| M12 | 30 | 54 | 30 | 53 | 20.5 | 1.75 |
| M14 (#DIN) | 30 | 54 | 30 | 53 | 20.5 | 2 |
| M16 | 35 | 63 | 35 | 62 | 27 | 2 |
| M18 (#DIN) | 35 | 63 | 35 | 62 | 27 | 2.5 |
| M20 | 40 | 72 | 40 | 71 | 30 | 2.5 |
| M22 (#DIN) | 40 | 72 | 40 | 71 | 30 | 2.5 |
| M24 | 50 | 90 | 50 | 90 | 36 | 3 |
| M27 (#DIN) | 50 | 90 | 50 | 90 | 36 | 3 |
| M30 | 65 | 108 | 60 | 109 | 45 | 3.5 |
| M33 (#DIN) | 65 | 108 | 60 | 109 | 45 | 3.5 |
| M36 | 75 | 126 | 70 | 128 | 54 | 4 |
| M39 (#DIN) | 75 | 126 | 70 | 128 | 54 | 4 |
| M42 | 85 | 144 | 80 | 147 | 63 | 4.5 |
| M45 (#DIN) | 85 | 144 | 80 | 147 | 63 | 4.5 |
| M48 | 100 | 166 | 90 | 168 | 68 | 5 |
| M52 (#DIN) | 110 | 184 | 100 | 187 | 78 | 5 |
| M56 | 110 | 184 | 100 | 187 | 78 | 5.5 |
| M64 | 120 | 206 | 110 | 208 | 90 | 6 |
| M72x6 | 150 | 260 | 140 | 260 | 100 | 6 |

- If lifting eye bolts form part of lifting equipment, CE marking is necessary.
- Lifting eye bolt do not require CE marking if not used for lifting (as towing eyes for example) or is only used once for lifting (such as for moving machines).

Maximum load L (N)

| | | M6 | M8 | M10 | M12 | M14 | M16 | M18 | M20 | M22 | M24 | M27 |
|----------|--|-----|------|------|------|------|------|------|-------|-------|-------|-------|
| 1 x bolt | | 900 | 1400 | 2300 | 3400 | 5000 | 7000 | 9300 | 12000 | 15000 | 18000 | 25000 |
| 2 x bolt | | 600 | 1000 | 1700 | 2400 | 3500 | 5000 | 6500 | 8600 | 10500 | 12900 | 18300 |

| | | M30 | M33 | M36 | M39 | M42 | M45 | M48 | M52 | M56 | M64 | M72x6 |
|----------|--|-------|-------|-------|-------|-------|-------|-------|-------|--------|--------|--------|
| 1 x bolt | | 32000 | 42000 | 46000 | 60000 | 63000 | 78000 | 86000 | 99000 | 115000 | 160000 | 200000 |
| 2 x bolt | | 23000 | 30500 | 33000 | 44000 | 45000 | 55000 | 61000 | 71000 | 82000 | 110000 | 140000 |