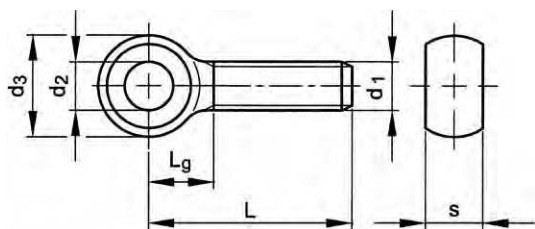


## Eye bolt fully threaded



DIN 444 LB  
NEN 2310 B



### Technical Data

d <sub>1</sub>	d <sub>2</sub> (H9)	d <sub>3</sub> (max.)	L <sub>g</sub> (max.)	P	s (max.)
M5	5	12	11	0.8	6
M6	6	14	14	1	7
M8	8	18	16	1.25	9
M10	10	20	18	1.5	12
M12	12	25	23	1.75	14
M16	16	32	27	2	17
M20	18	40	32	2.5	22

Thread Metric thread  
Material Steel  
Class 4.6  
Surface treatment Zinc plated



### Standard sizes

d <sub>1</sub> x L	d <sub>1</sub> x L	d <sub>1</sub> x L
M5X25	M10X75	M16X90
M5X35	M10X80	M16X100
	M10X100	M16X110
M6X30	M10X120	M16X120
M6X40	M10X140	M16X140
M6X50		M16X160
	M12X60	M16X180
M8X40	M12X70	M16X200
M8X50	M12X80	
M8X60	M12X100	M20X100
M8X80	M12X110	M20X120
	M12X120	M20X140
M10X40	M12X140	M20X150
M10X50		M20X160
M10X60	M16X70	M20X180
M10X70	M16X80	M20X200