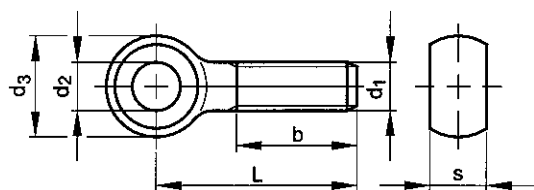


Eye bolt



DIN 444 B
NEN 2310 B



TECHNICAL

d ₁	b (min.): L≤125mm	b (min.): 125mm<L≤200mm	b (min.): L>200mm	d ₂ (H9)	d ₃ (max.)	P	s (max.)
M6	18	-	-	6	14	1	7
M8	22	28	-	8	18	1.25	9
M10	26	32	-	10	20	1.5	12
M12	30	36	49	12	25	1.75	14
M16	38	44	57	16	32	2	17
M20	46	52	65	18	40	2.5	22
M24	54	60	73	22	45	3	25
M27	60	66	79	25	50	3	27
M30	66	72	85	28	55	3.5	30

STANDARD SIZES

d ₁ x L	d ₁ x L	d ₁ x L
M6X30		M20X140
M6X40		M20X150
M6X50	M12X60	M20X160
M6X60	M12X70	M20X180
M6X70	M12X80	M20X200
M6X80	M12X90	M20X260
	M12X100	
	M12X110	
M8X40	M12X120	M24X80
M8X45	M12X130	M24X100
M8X50	M12X140	M24X110
M8X60	M12X150	M24X120
M8X70		M24X130
M8X80	M16X60	M24X140
M8X90	M16X70	M24X150
M8X100	M16X80	M24X160
M8X110	M16X90	M24X180
M8X120	M16X100	M24X200
M8X130	M16X110	M24X220
M8X140	M16X120	
	M16X130	M27X120
M10X40	M16X140	M27X140
M10X50	M16X150	M27X160
M10X60	M16X160	M27X180
M10X65	M16X180	M27X200
M10X70	M16X200	
M10X80		M30X120
M10X90	M20X60	M30X140
M10X100	M20X80	M30X160
M10X110	M20X100	M30X180
M10X120	M20X110	M30X200
M10X130	M20X120	
M10X140	M20X130	