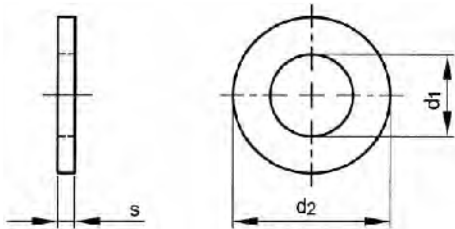
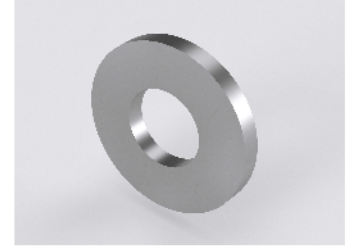


Plain washer for cheese head screws



DIN 433
ISO 7092



Technical Data

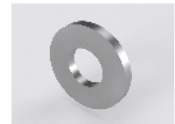
For nom.size	d ₁	d ₂	s	For nom.size	d ₁	d ₂	s
M1.7	1.7	3.5	0.3	M6	6.4	11	1.6
M2.2	2.2	4.5	0.3	M8	8.4	15	1.6
M2	2.2	4.5	0.3	M10	10.5	18	1.6
M2.5	2.7	5.0	0.5	M12	13	20	2
M2.6 (≠DIN)	2.7	5	0.5	M14	15	24	2.5
M3	3.2	6	0.5	M16	17	28	2.5
M3.5	3.7	7	0.5	M18	19	30	2.5
M4	4.3	8	0.5	M20	21	34	3
M5	5.3	9	1				

Materials

Material	Class	Surface treatment	Color
St		Zipl	
St.St. A2			
St.St. A4			
Br		Ni.pl.	
Plastic PA	PA 6.6		White

Plain washer for cheese head screws

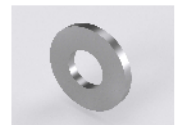
Material Steel
Surface treatment Zinc plated



For nom. size		For nom. size		For nom. size	
M2	500	M6	250	M14	100
M2,6	500	M8	200	M16	100
M3	250	M10	200	M18	100
M4	250	M12	100	M20	100
M5	250				

Plain washer for cheese head screws

Material Stainless steel A2



For nom. size		For nom. size		For nom. size	
M1,7*	2000	M5	500	M14	100
M2,5	500	M6	500	M16	100
M3	500	M8	200	M18	100
M3,5*	1000	M10	200	M20	100
M4	500	M12	100		

Plain washer for cheese head screws

Material Stainless steel A4



For nom. size

M2	100
M2,5	100
M3	500
M3,5*	1000
M4	500

For nom. size

M5	500
M6	500
M8	200
M10	200
M12	100

For nom. size

M14	100
M16	100
M18	100
M20	100

Plain washer for cheese head screws

Material Brass
Surface treatment Nickel plated



For nom. size

M2	500
M2,6	500
M3	250
M4	250

For nom. size

M5	250
M6	250
M8	200
M10	200

For nom. size

M12	100
M14	100
M16	100

Plain washer for cheese head screws

Material Plastic Polyamide (nylon)
Class PA 6.6
Color White
DIN ≈433
ISO ≈7092



For nom. size

M3	200
M4	200

For nom. size

M5	200
M6	200

For nom. size

M8	200
M10	100