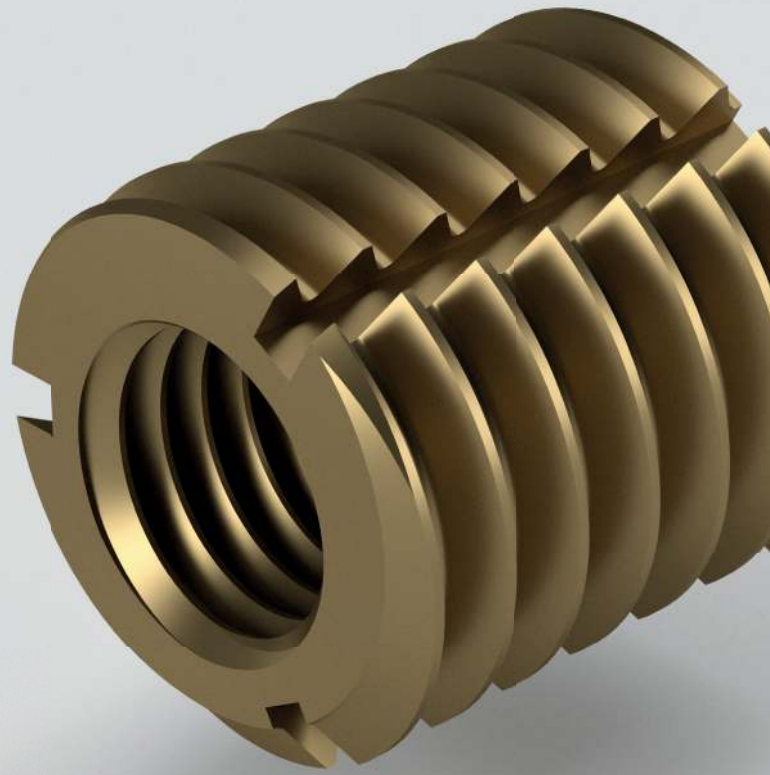
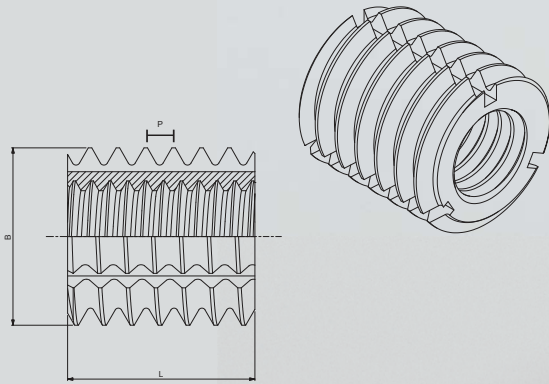


The IT range are a double ended self tapping insert for cold installation into most types of plastic and composite materials.

The self tapping function is aided by cutting flutes. Headed versions are available.



| THREAD SIZES | PITCH INTERNAL | PITCH EXTERNAL P | DIAM EXTERNAL B | LENGTH L | HOLE DIAMETER | HOLE DEPTH | BOSS DIAMETER | STYLE |
|--------------|----------------|------------------|-----------------|----------|---------------|------------|---------------|----------|
| ISO Metric | mm | mm | mm | mm | mm | mm | mm | mm |
| M2 | 0.40 | 0.79 | 3.50 | 4.00 | 3.1 - 3.3 | 4.4 | 5.8 | Short |
| M2 | 0.40 | 0.79 | 3.50 | 4.80 | 3.1 - 3.3 | 5.3 | 5.8 | Standard |
| M2.5 | 0.45 | 1.06 | 4.33 | 4.00 | 3.8 - 4.1 | 4.4 | 7.2 | Short |
| M2.5 | 0.45 | 1.06 | 4.33 | 5.25 | 3.8 - 4.1 | 5.8 | 7.2 | Standard |
| M2.5 | 0.45 | 1.06 | 4.33 | 6.25 | 3.8 - 4.1 | 6.9 | 7.2 | Long |
| M3 | 0.50 | 1.06 | 4.73 | 4.00 | 4.1 - 4.4 | 4.4 | 7.7 | Short |
| M3 | 0.50 | 1.06 | 4.73 | 5.25 | 4.1 - 4.4 | 5.8 | 7.7 | Standard |
| M3 | 0.50 | 1.06 | 4.73 | 6.25 | 4.1 - 4.4 | 6.9 | 7.7 | Long |
| M3.5 | 0.60 | 1.15 | 5.52 | 5.00 | 5.0 - 5.3 | 5.5 | 9.3 | Short |
| M3.5 | 0.60 | 1.15 | 5.52 | 6.20 | 5.0 - 5.3 | 6.9 | 9.3 | Standard |
| M3.5 | 0.60 | 1.15 | 5.52 | 7.30 | 5.0 - 5.3 | 8.1 | 9.3 | Long |
| M4 | 0.70 | 1.27 | 6.31 | 5.60 | 5.8 - 6.1 | 6.2 | 10.7 | Short |
| M4 | 0.70 | 1.27 | 6.31 | 7.10 | 5.8 - 6.1 | 7.9 | 10.7 | Standard |
| M4 | 0.70 | 1.27 | 6.31 | 8.40 | 5.8 - 6.1 | 9.3 | 10.7 | Long |
| M5 | 0.80 | 1.41 | 7.50 | 6.40 | 6.9 - 7.2 | 7.1 | 12.6 | Short |
| M5 | 0.80 | 1.41 | 7.50 | 8.40 | 6.9 - 7.2 | 9.3 | 12.6 | Standard |
| M5 | 0.80 | 1.41 | 7.50 | 10.00 | 6.9 - 7.2 | 11.0 | 12.6 | Long |
| M6 | 1.00 | 1.59 | 8.69 | 7.90 | 8.0 - 8.4 | 8.7 | 14.7 | Short |
| M6 | 1.00 | 1.59 | 8.69 | 9.80 | 8.0 - 8.4 | 10.8 | 14.7 | Standard |
| M6 | 1.00 | 1.59 | 8.69 | 12.00 | 8.0 - 8.4 | 13.2 | 14.7 | Long |
| M8 | 1.25 | 1.95 | 11.06 | 9.50 | 10.1 - 10.6 | 10.5 | 18.6 | Short |
| M8 | 1.25 | 1.95 | 11.06 | 12.40 | 10.1 - 10.6 | 13.7 | 18.6 | Standard |
| M10 | 1.50 | 1.95 | 13.95 | 12.00 | 13.0 - 13.5 | 13.2 | 23.7 | Short |
| M10 | 1.50 | 1.95 | 13.95 | 16.00 | 13.0 - 13.5 | 17.6 | 23.7 | Standard |

Brass - to BS EN 12164 CW614N - RoHS COMPLIANT

