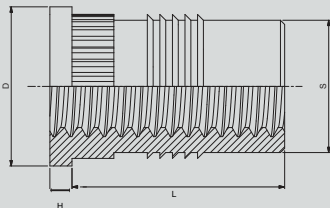
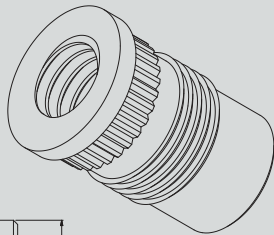


The IJ & IK range are designed for cold pressing into most thermoplastic materials.

They are self-aligning with a combination of sharp fins and straight knurls which result in a high torque and pull out performance.



THREAD SIZES	L	H	D	R*	S	No of	Rec.Hole	Min wall
ISO Metric	mm	mm	mm	mm	mm	Fins	-0.00 +0.10	Thickness
M2	4.0	0.45	4.8	3.7	3.1	2	3.2	1.6
M2.5	4.8	0.58	5.5	4.5	3.9	3	4.0	2
M3	4.8	0.58	5.5	4.5	3.9	3	4.0	2
M3.5	6.4	0.74	6.4	5.3	4.7	4	4.8	2.4
M4	7.9	0.89	7.1	6.1	5.5	5	5.6	2.8
M5	9.5	1.07	7.9	7.0	6.3	5	6.4	3.2
M6	12.7	1.32	9.5	8.6	7.9	7	8.0	4.0
M8	12.7	1.32	11.0	10.2	9.5	7	9.6	4.8

*Unheaded Brass - to BS EN 12164 CW614N - RoHS COMPLIANT