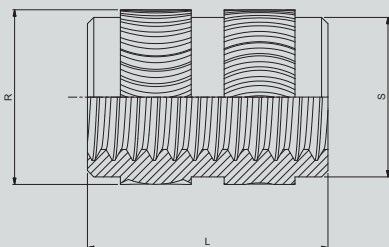
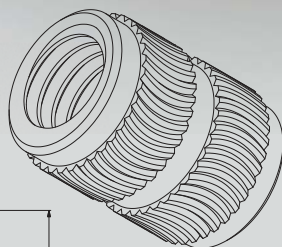
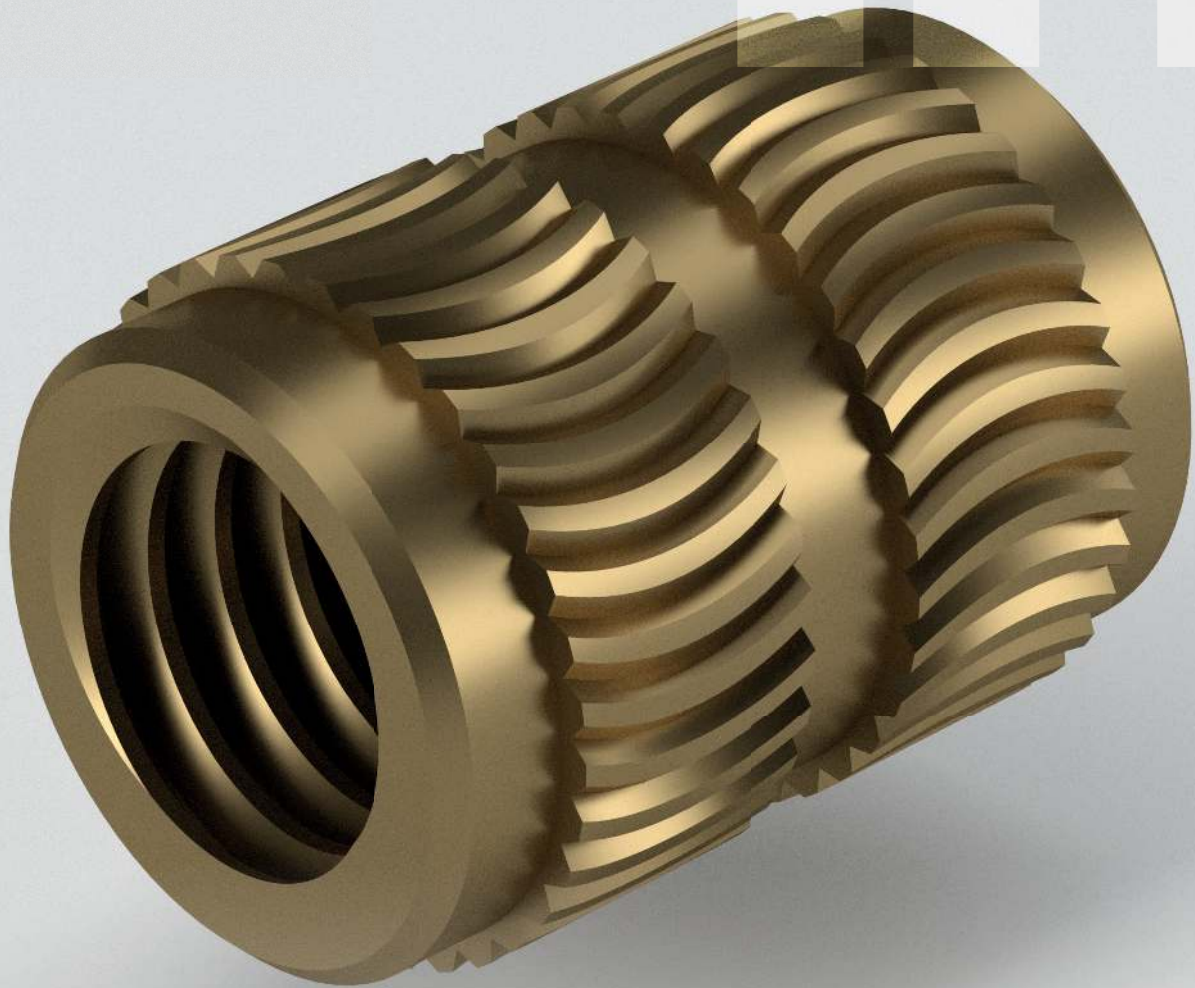


The IH & II range of inserts are designed for notch sensitive, brittle materials.

The rounded knurl pattern reduces stress when inserted using heat.

These are double ended to aid automatic feeding and assembly.



THREAD SIZES	L	H	D +	R +	S	Rec.Hole -0.00 +0.10	Min wall Thickness
ISO Metric	mm	mm	mm	mm	mm	mm	mm
M2	3.9	0.51	4.8	3.5	3.1	3.2	1.4
M2.5	5.8	0.58	5.5	4.4	3.9	4.0	1.8
M3	5.8	0.58	5.5	4.4	3.9	4.0	1.8
M3.5	7.1	0.74	6.4	5.2	4.7	4.8	2.1
M4	8.1	0.89	7.1	6.1	5.5	5.6	2.4
M5	9.5	1.07	7.9	6.9	6.3	6.4	2.8
M6	12.7	1.32	9.5	8.5	7.9	8.0	3.6
M8	12.7	1.32	11.1	10.0	9.5	9.6	5

*Headed

Brass - to BS EN 12164 CW614N - RoHS COMPLIANT