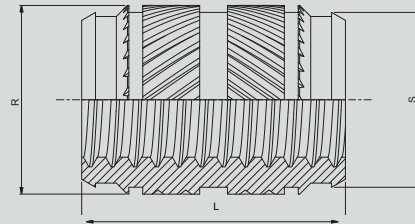
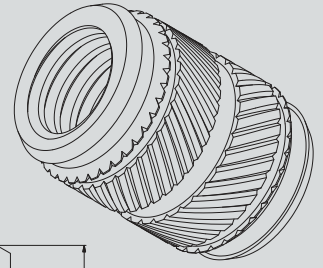


The IC range are a self-aligning, double ended insert making these ideal for automatic assembly.

Opposing knurls and veins give these a superior pull out and torque resistance.

These can be installed with heat or ultrasonics.



THREAD SIZES	L	R	S	Rec.Hole -0.00 +0.10	Min wall Thickness
ISO Metric	mm	mm	mm	mm	mm
M2 (Short)*	3.2	3.6	3.1	3.2	1.3
M2	4.0	3.5	3.1	3.2	1.3
M2.5	5.7	4.4	3.9	4.0	1.6
M3	5.7	4.4	3.9	4.0	1.6
M3.5	7.1	5.2	4.7	4.8	1.8
M4	8.1	6.1	5.5	5.6	2.1
M5	9.5	6.8	6.3	6.4	2.6
M6	12.7	8.5	7.9	8.0	3.3
M8	12.7	10	9.5	9.6	4.5
M10	12.7	12.3	11.8	11.9	6.0

*Non-Standard. M.O.Q Applies

Brass - to BS EN 12164 CW614N - RoHS COMPLIANT



IC