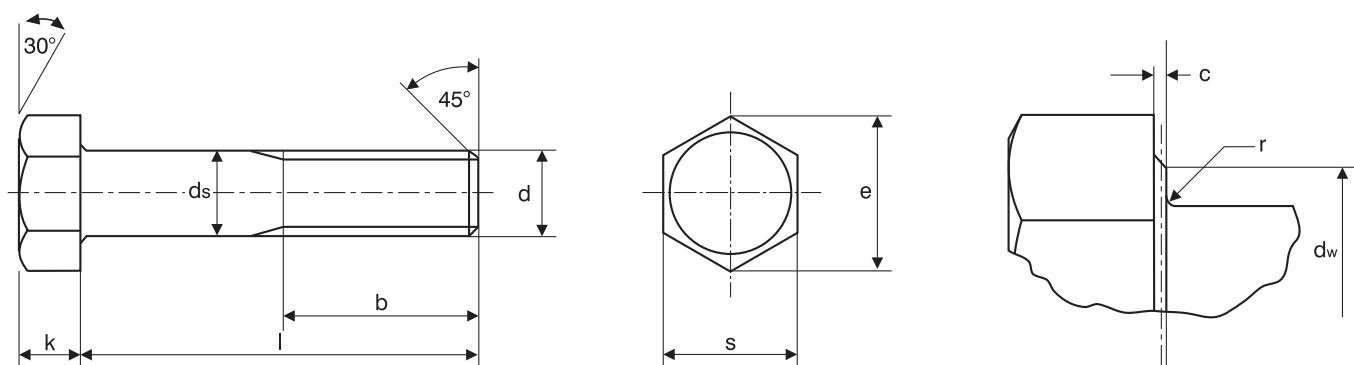


Hexagon Head Bolts & Setscrews (Unified)

BS 1768 High Tensile



BS 1768 Dimensions of bolts

Nominal size and thread diameter d	Number of threads per inch		Thread Length b		Diameter of unthreaded shank ds		Width across flats s		Width across corners e	Dia. of washer face dw		Thickness of head k		Radius under head r	
	UNC	UNF	Bolt $\leq 6in.$	Bolt $> 6in.$	min.	max.	min.	max.	max.	min.	max.	nom.	min.	min.	max.
1/4	20	28	0.750	1.000	0.2465	0.2500	0.4305	0.4375	0.505	0.411	0.421	0.153	0.163	0.015	0.025
5/16	18	24	0.875	1.125	0.3090	0.3125	0.4930	0.5000	0.577	0.473	0.483	0.201	0.211	0.015	0.025
3/8	16	24	1.000	1.250	0.3715	0.3750	0.5545	0.5625	0.650	0.535	0.545	0.233	0.243	0.015	0.025
7/16	14	20	1.125	1.375	0.4335	0.4375	0.6170	0.6250	0.722	0.595	0.605	0.281	0.291	0.015	0.025
1/2	13	20	1.250	1.500	0.4960	0.5000	0.7420	0.7500	0.866	0.720	0.730	0.313	0.323	0.015	0.025
9/16	12	18	1.375	1.625	0.5585	0.5625	0.8045	0.8125	0.938	0.782	0.792	0.361	0.371	0.020	0.045
5/8	11	18	1.500	1.750	0.6190	0.6250	0.9295	0.9375	1.083	0.908	0.918	0.393	0.403	0.020	0.045
3/4	10	16	1.750	2.000	0.7440	0.7500	1.1150	1.1250	1.300	1.090	1.100	0.463	0.483	0.020	0.045
7/8	9	14	2.000	2.250	0.8670	0.8750	1.3005	1.3125	1.515	1.275	1.285	0.543	0.563	0.040	0.065
1	8	12	2.250	2.500	0.9920	1.0000	1.4880	1.5000	1.732	1.473	1.463	0.597	0.627	0.060	0.095
1.1/8	7	8	2.500	2.750	1.1170	1.1250	1.6575	1.6875	1.948	1.625	1.641	0.678	0.718	0.060	0.095
1.1/4	7	8	2.750	3.000	1.2420	1.2500	1.8300	1.8750	2.165	1.797	1.813	0.773	0.813	0.060	0.095
1.3/8	6	8	3.000	3.250	1.3650	1.3750	2.0175	2.0625	2.382	1.985	2.001	0.838	0.878	0.060	0.095
1.1/2	6	8	3.250	3.500	1.4900	1.5000	2.2050	2.2500	2.598	2.172	2.188	0.934	0.975	0.060	0.095
1.3/4	5	8	3.750	4.000	1.7400	1.7500	2.5650	2.6250	3.031	2.527	2.543	1.074	1.134	0.060	0.095
2	4.5	8	4.250	4.500	1.9900	2.0000	2.9400	3.0000	3.464	2.902	2.918	1.203	1.263	0.060	0.095